

Art at Hautlieu

Year 12 Induction

[Watch this](#)

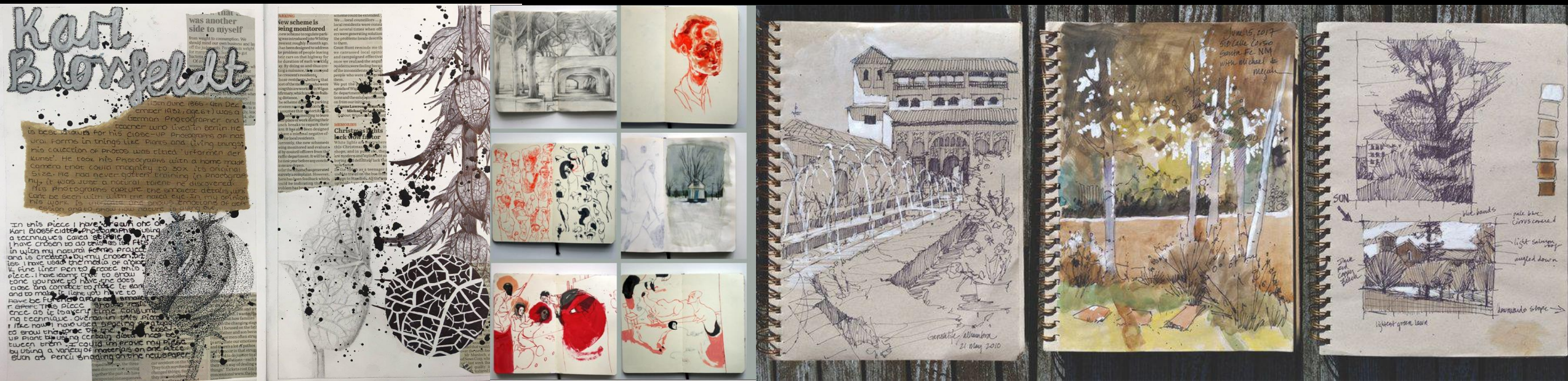
INDUCTION TASK

- All students to make
- Make wire, clay and mod-roc figure
- Make A2 drawing with charcoal and white paint on brown paper
- Make notes from Powerpoint introduction / guidance / reference points re : Summer Task

WE WORK IN SKETCHBOOKS.

BUY SKETCHBOOKS - £3.50! (NOT ESSENTIAL TO BUY FROM US BUT YOU NEED GOOD QUALITY PAPER AND CLEAN SOLID COVERS)

Take £3.50 to the Finance Office (near English Dept) and they will give you a receipt which you give to an art teacher or art technician who will give you a book



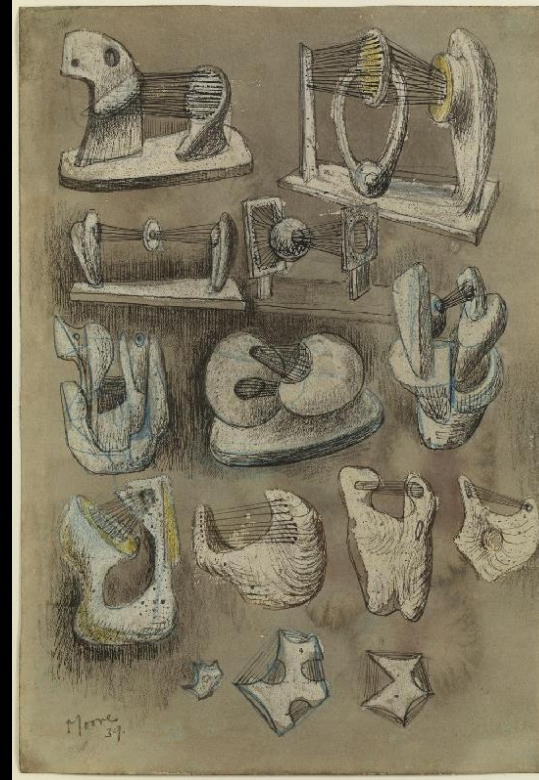
PRIMARY SOURCE IS KEY

ORIGINALITY, INDEPENDENCE AND OWNERSHIP



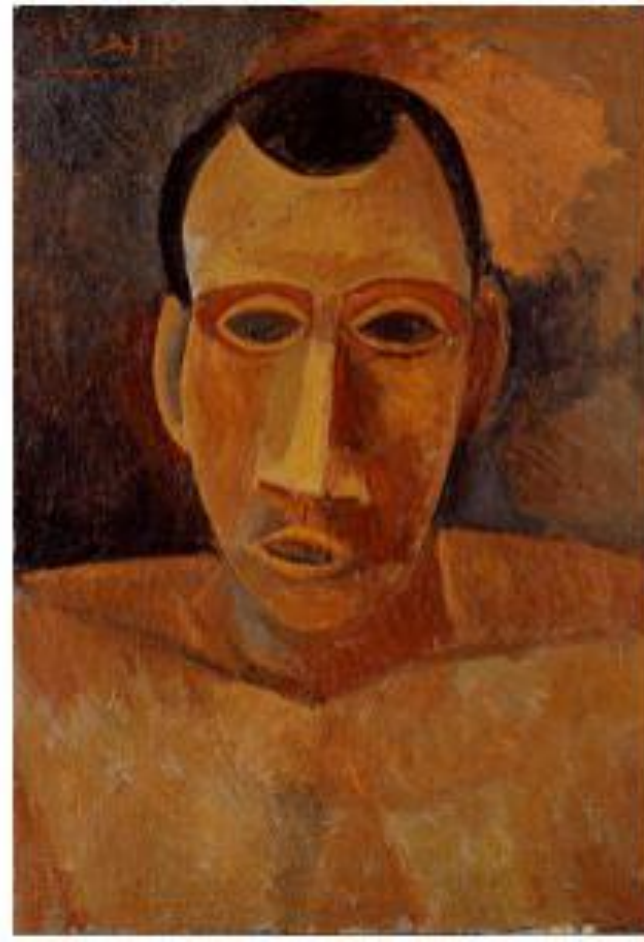
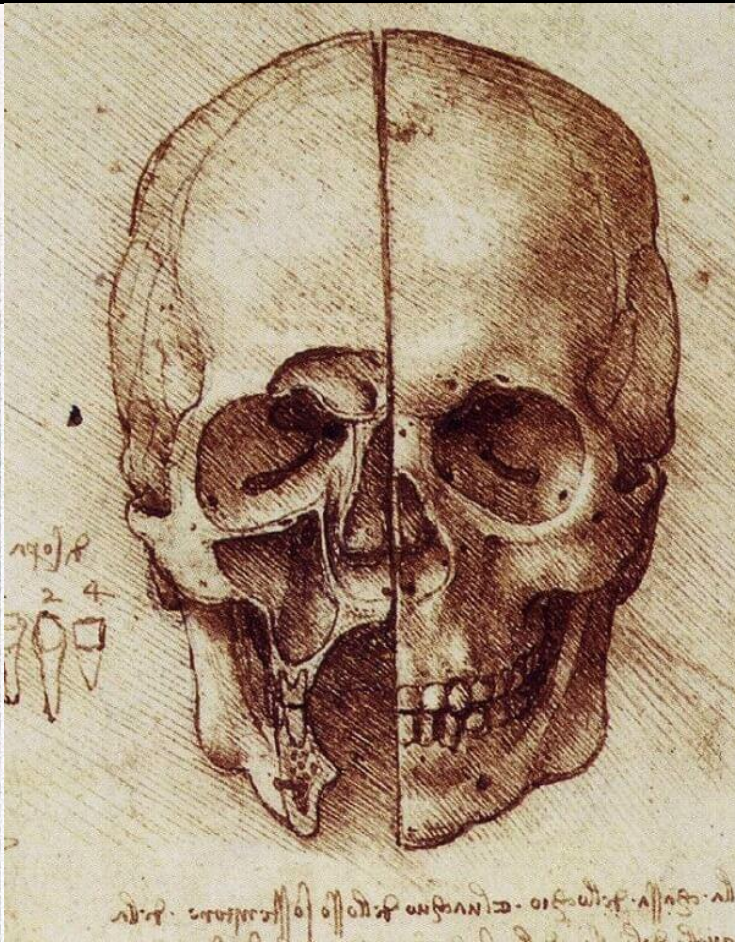
DRAWING FROM DIRECT OBSERVATION

IS THE BEDROCK TO
EVERYTHING IN ART INCLUDING
HOW YOU ARE ASSESSED.
ALSO USING A RANGE OF
MATERIALS IS EXTREMELY
IMPORTANT.



TAKING INSPIRATION – NOT COPYING

We look at other artists to see what has gone before, to see what is possible and to make our work better.



LIVED EXPERIENCE – GLOBAL CONTEXT

Originality, understanding yourself, understanding more about the world



ACT ON YOUR
TEACHER'S ADVICE!
WE KNOW WHAT WE
ARE TALKING ABOUT!

A-Level Art

- 60% coursework project
 - Sketchbook prep work is worth 60%
 - 1000 – 3000 word essay (Related Study) is worth 20%
 - Final piece is worth 20%
- 40% exam board set project
 - Sketchbook prep work is worth 75%
 - Final piece is worth 25%

Timeline Year 12

Induction days and Induction Task

Developing Coursework project



1st half term: Skills Audit
2nd Half term: Group project

1st Half Term: Mock exam
2nd Half Term: Related Study intro

Y12 SUMMER TASK

- This summer task is the starting point for a body of work based on the phrase 'Human Nature'. The deadline for your summer task is your first lesson in September.
- We want you to use a sketchbook to produce this summer task or use a combination of Word/Powerpoint and physical paper if you have no access to a printer
- Remember we are a visual language so how you put things together visually is really important. DO NOT use different coloured gel pens or felt tips to annotate your work, DO NOT use bubble writing. DO NOT put borders around things. Use black pen or pencil to explain your ideas.

WHAT WE WANT YOU TO DO:

Develop a project based on Ice Age figures by completing the tasks in this powerpoint. You must show evidence of research that informs your work. You must include in your sketchbook:

- Task 1: 2 pages of research into Human Nature
- Task 2: At least one A4 drawing or painting of a sculpture from your research
- Task 3: Artist research
- Task 4: Make a sculpture based on your research (more on following slides)
- Task 5: Photograph figure in the landscapes
- Task 6 Drawings from photos



Human Nature

- Read these articles [‘Did Art Peak 30,000 years ago?’](#)
- [‘The Lion Man: an Ice Age Masterpiece’](#)
- Watch this short film:
- [‘The Lion Man’](#)



Task 1: Research figurative sculpture

- Research Sculptures, particularly figures
- Find out how they were made, who made them and why. You could even look at the differences and similarities of sculptures across the world
- Record this in your sketchbook over 2 pages. Make sure you include large images

Task 2:

Full page
drawing
from
research

- From your research, complete an A4 (full page) drawing that is connected to your research so far...
- It can be in a material of your choice

Task 3: Research an Artist to support your sculpture

- Task 4 is to make a sculpture based on **Human Nature**. You also need to look at a modern artist to inform your idea
- Select an artist that relates to your idea and you find inspirational – this can be from the presentation or from your own research.
- Present your research across two A4 pages (a double page spread). Think about what information is relevant – e.g. where they went to school is not very relevant to their work. You also need to include at least 4 large images of their work.
- Make sure you analyse their work and identify what about their work you find inspirational or interesting.
- We are more interested in your interpretation of their work and your analysis of the formal elements in their work. If you need a bit of help with this, have a look at this link: <https://www.bbc.co.uk/bitesize/topics/z9kmhyc>



Alberto Giacometti



Anna Gillespie



Daisy Youngblood



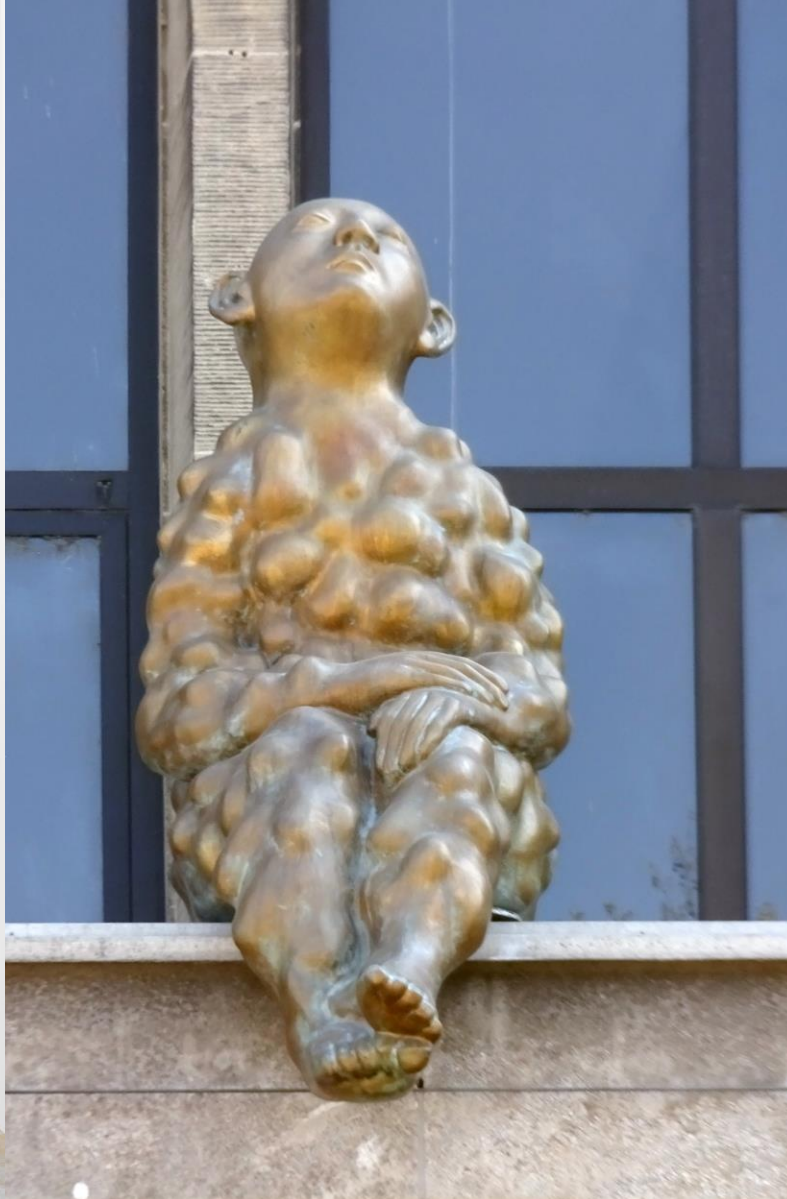
Henry Moore



Berlinde de Bruyckere



Rebecca Warren



Paloma Varga-Weiss



Maurice Blik

Task 4: Make a figure

- Make a figure based on your research on Human Nature and a modern artist
- You can use any materials that you like, for example
 - Newspaper and masking tape
 - Carve into a candle or wood
 - Clay
 - Sticks
- It can be any size from fitting the palm of your hand to 7ft tall
- You must be able to transport it and bring it in to the Art Department for the first lesson
- It must be interesting to draw from – you will be doing lots of work with it

Task 5: Photograph your figure

- Photograph your figure in one of the following landscapes – try to create a sense of narrative with your images
 - Dolmans
 - Forest /Woods
 - Beach
- You should aim to take at least 15 different photographs, ideally you would take many more and filter it down to the best 15
- These images should reflect your ideas and consider lighting, colours, composition
- If you need some help, have a look at the pages
here: <https://www.bbc.co.uk/bitesize/topics/zyvkjxs>

Task 6: Drawings

- Create 5 A4 drawings or paintings from your photos
- Use a range of materials that you have available e.g.
 - Pens – biros, fountain pens, fine liners
 - Pencils – graphite pencils, coloured pencils
 - Paints – acrylic, watercolours, oils
 - Alternative paints – tumeric powder, coffee, tea, food colouring etc
- No paper? Think about alternatives!
 - Newspaper or magazine or old book paper
 - Cereal packet cardboard
 - Toilet rolls
 - Draw with objects and photograph

TODAY'S TASK

1. CREATE A PAPER FIGURE USING MASKING TAPE AND NEWSPAPER
2. TAKE A PHOTO OF IT IN THREE WAYS
3. EDIT THE PHOTO USING BLACK AND WHITE, BRIGHTNESS, CONTRAST ETC. EMPHASISE THE "DRAMA"
4. USE BROWN GUM TAPE, CHARCOAL AND WHITE PAINT TO CREATE A DRAWING OF YOUR PHOTOGRAPH

