



DEC Level 3 | Hautlieu School | Initial Brief

CCA Galleries have purchased the former Millbrook House Hotel and its grounds in Jersey, Channel Islands.

The former hotel site features an [existing Listed grand Regency-style villa](#)¹, a hotel accommodation block extension and some other ancillary outbuildings.

After the filming of this [news report](#)², CCA have changed their focus and approached you, as architect, to create a different proposal for an inclusive family-friendly staycation hotel resort (with a 'feel' similar to CenterParks/ Les Ormes), that will also offer opportunity to showcase art exhibitions to the general public too. They are keen to reflect both the unique nature of Jersey's architectural history but also portray a nod to the best of contemporary architecture and have been inspired by the 2021 RIBA House of the Year "[House on the Hill](#)"³ by Alison Brooks Architects. ([Channel 4 video here](#)⁴)

They wish to retain the existing listed villa building with only superficial, cosmetic changes and use it as a the hotel reception and adjoining bar. They wish for you, rather than knock it down, to 'retrofit' the existing 1970's hotel block into accommodation for families and staycation guests, with a minimum of 25% of the rooms accessible by all and as fully inclusive as possible. Finally, they wish for you to investigate and create a newbuild, multifunctional 'activity' block/pavilion at an appropriate location on the site to house a gym, activities and a cafe space. Within this, there must be opportunity to house regular changing art exhibitions in both internal and external gallery spaces.

The client also wishes for the entire development to work towards the United Nations 'Sustainable Development Goals' and consider sustainability at every stage of the project's lifecycle.

They expect the total floor area of the hotel accommodation and activity block to be in the region of 2500-3000m² – this excludes the existing villa. Within that overall area total, the activity block should be approximately 750-900m² in total, split across two or three storeys.

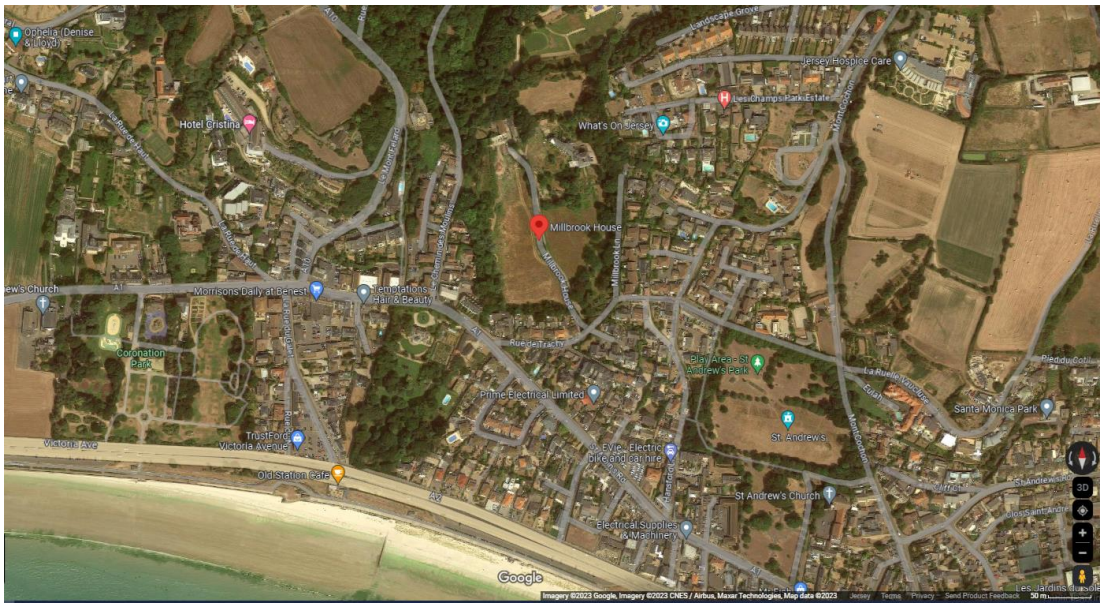
Links:

¹ https://www.theislandwiki.org/index.php/Millbrook_House

² <https://www.itv.com/news/channel/2021-03-11/14m-plans-for-millbrook-house-hotel-development-revealed>

³ <https://architecturetoday.co.uk/house-on-the-hill-alison-brooks-riba-house-of-the-year-2021/>

⁴ <https://www.channel4.com/programmes/grand-designs-house-of-the-year/on-demand/71169-001>
from 34m 51secs



<https://goo.gl/maps/wEfvxzVyy5HT86PB9>