



Hautlieu

14
2025

Welcome

We are pleased that you have decided to find out more about the opportunities and GCSE courses available to students who join Hautlieu through the 14+ transfer system. We hope that you find this prospectus interesting and that it answers your questions about our Year 10 and 11 curriculum.

We are committed to providing the highest standard of education for our students within a supportive environment to ensure that they achieve excellent levels of academic success.

We have high expectations of our students, not only academically but also socially and we are proud of our record and our standing in the community we serve. Visitors to Hautlieu frequently comment on the calm, purposeful atmosphere of the school and the conduct and attitude of our students.

The positive and focused approach of our students is reflected in the strong academic results achieved in 2024 where over 94% of our students achieved 5 grades 9 – 4. All of our examination results can be viewed on our website www.hautlieu.sch.je.

Thinking to the future and your post-16 choices?

Joining Hautlieu in Year 10 gives you access to a four-year programme designed to ensure you are more than ready for your A Levels in Year 12 and Year 13 and beyond that, for university and the start of your career. This is supported by the fact that

during your GCSE programme you will be taught by teachers who also teach A Level and are therefore experts in preparing you for next steps. Our Careers and Guidance programme will be integrated into your studies, mentor time and specialist events.

The Hautlieu programme

Our programme of compulsory and optional subjects is designed to ensure a breadth of opportunity for all students whilst maximising achievement.

Students choose three optional subjects alongside Mathematics, either Combined Science or the three Single Sciences, English Language, English Literature, a Modern Foreign Language (French, Spanish, Mandarin or Home Languages), Physical Education and Personal Social and Health Education/ Citizenship. The total number of GCSE subjects studied will be a minimum of 9. We will not finalise the option blocks until we have received the choices of Year 10 students. We take this individual approach in order to provide the “best fit” for students as we have found that this is the most successful way of meeting students’ individual needs.

Extension Opportunities in Years 10 & 11

Where students demonstrate high levels of ability in a particular subject there will be opportunities provided to stretch, challenge and extend students to achieve the highest grades.

Our school motto

is ‘Summa Petamus’

which means

‘Aim for the Highest’.

Hautlieu high expectations

We believe that all Hautlieu students should aspire to these qualities.

Conscientious

You should be dedicated to achieving the best you possibly can. Our school motto is 'Summa Petamus' which means 'Aim for the Highest'.

Hard workers

You should attend regularly, meet deadlines and be committed to the learner profile.

Committed

You should undertake homework for all subjects in addition to taught lessons.

Inquirers

You should acquire the skills necessary to conduct inquiry and research and show independence in learning.

Knowledgeable

You should explore concepts, ideas and issues that have local and global significance, acquire in-depth knowledge and develop understanding.

Thinkers

You should exercise initiative in applying thinking skills critically and creatively to recognise and approach complex problems, and make reasoned, ethical decisions.

Communicators

You should understand and express ideas and information confidently and creatively and work effectively and willingly in collaboration with others.

Principled

You should act with integrity and honesty, with a strong sense of fairness, justice and respect for the dignity of individuals, groups and communities. Take responsibility for your own actions and the consequences that accompany them.

Open-minded

You should understand and appreciate your own culture and history and be open to the perspectives, values and traditions of other individuals and communities. You should become accustomed to seeing and evaluating a range of points of view and be willing to grow from the experience.

Caring

You should show empathy, compassion and respect towards the needs and feelings of others, and act to make a positive difference to the lives of others and to the environment.

Risk-takers

You should approach unfamiliar situations and uncertainty with courage and forethought and have the independence of spirit to explore new roles, ideas and strategies.

Balanced

You should understand the importance of intellectual, physical and emotional balance to achieve personal wellbeing for yourself and others.

Reflective

You should give thoughtful consideration to your own learning and experience and be able to assess and understand your strengths and limitations in order to support your learning and personal development.



Our school is a place where:

We strive to excel in
our learning.

We act to make a positive
difference in everything we do.

We treat each other with
fairness, respect and care.

We believe in our own
capabilities to build a
better world.

And we are proud of it.



Hautlieu



Subject Choices

Compulsory subjects

- English**
Students will study both:
 - + English Language
 - + English Literature
- Languages**
All students will study one language other than English from the choices below. Students may also choose to take an additional language as one of their option choices.
 - + Home Language (A multi-lingual learner course to study your first language)
 - + French
 - + Mandarin
 - + Spanish
- + Mathematics
 - + Physical Education – For all students
- + Personal, Social & Health Education (PSHE) & Citizenship

Optional subjects

- + Art
- + Astronomy
- + Business
- + Design Technology
- + Design, Engineer, Construct! (DEC!)
- + Drama
- + Geography
- + Graphic Communication and Design
- + History
- + Computer Science
- + ICT
- + Music
- + Physical Education as a GCSE option
- + Psychology
- + Religious Studies
- + An additional language (French, Mandarin or Spanish)

If you require any further information about the school, the 14+ transfer process, or our post-16 courses please contact Jackie Fromage, Student Admissions Administrator by telephone on 01534 736242, by email j.fromage@hautlieu.sch.je or visit our website www.hautlieu.co.uk

Choosing your Science options

Students can follow the GCSE Combined Science course where they study all three sciences and gain two GCSE qualifications. However, if you are hoping to pursue a science-related career, such as Medicine, Veterinary Science or Dentistry, then choosing to study three Science GCSEs is the more appropriate option.

The Science Department are an enthusiastic, motivated and committed team who are passionate about Science and would like to see as many students as possible joining the school choose the triple Science GCSE option route.

Both routes will allow you to access the A Level Science courses that have been studied at GCSE level. You will, however, need to achieve a minimum of a grade 6-6 in Combined Science or a grade 6 in the particular Science subject you want to study at A Level.

Contents

12	Art	29	ICT	
13	Astronomy	30	Mandarin	
14	Biology	31	Maths	
15	Business	32	Music	
16	Chemistry	33	Psychology	
17	Combined Science	NEW GCSE	34	Physical Education
18	Computer Science	35	Physics	
19	Design Technology	36	Religious Studies	
20	Design, Engineer, Construct! (DEC!)	37	Spanish	
21	Drama	38	Extracurricular activities	
22	English Language	39	Student wellbeing	
23	English Literature	40	Rights Respecting Schools	
24	French	41	Timeline of the process to join Hautlieu	
25	Geography	43	Application procedure and entry criteria	
26	Graphic Communication and Design	45	Application form	
27	History			
28	Home Language (study your first language)			

Art

Are you interested in: Creative and innovative drawing, painting and making, history and theory of art and design, art curating, architecture?

Head of subject: Mr Cole
Exam board: OCR
Exam code/s: J171
Entry requirements:
None

Introduction to your subject

Our courses focus on developing core skills with knowledge and understanding of contemporary practice, art theory, history and more. All students will be encouraged to embrace a range of disciplines and challenge their appreciation of art with the production of sketchbooks, and final works of art.

Course content

Component 01: Portfolio – 120 marks (60%)

Students produce a portfolio of practical work showing their personal response to a set starting point, brief, scenario or stimulus. This can include sketchbooks, digital presentations, mounted sheets, maquettes, prototypes, animated work, scale models or illustrated written work.

The portfolio must provide evidence that the student has met all four assessment objectives.

Examinations

Component 02: Externally set task – 80 marks (40%)

Students respond to one of five themes, each with a range of written and visual starting points and stimuli. Students research, plan and develop ideas for their response to the option they have chosen, which they must then realise within the ten-hour supervised time period.

All students
will be encouraged
to embrace a range
of disciplines and
challenge their
appreciation of art

Astronomy

Are you interested in: A science-related career? Then studying Astronomy alongside your sciences will improve your core skills as well as both your computer based and physical understanding of space and time.

Head of subject: Mr Bowen-Price
Exam board: Pearson Edexcel
Exam code: 1AS0
Entry requirements:
None

Introduction to your subject

You will be able to study GCSE Astronomy alongside your choice of Science GCSEs.

Astronomy will allow you to access the A Level in Physics with a minimum of a grade 6 in GCSE Physics or 6-6 in Combined Science. In addition, to study Physics at A Level you will also need a minimum of a grade 6 in GCSE Maths.

We aim to promote the study of Astronomy in ways that help you to develop curiosity about the nature of space beyond earth, give you an insight into how astronomy works and enable you to appreciate its relevance to your everyday lives.

The scope and nature of the study will be broad, coherent, practical and satisfying. It should encourage you to be inspired, motivated and challenged by the subject and its achievements.

Course content

In GCSE Astronomy you will learn through a mixture of virtual reality and teacher led activities. Key objectives of the course are to:

- + Create virtual models of galaxies and solar systems from real astronomical data.
- + Gain skills in astronomical observations through both naked-eye and telescopic methods.
- + Undertake your own independent astronomical investigations.
- + Develop techniques to navigate through celestial observations.
- + Make predictions on planetary motions.
- + Determine the life cycle of a star and solar system from creation through to re-creation.
- + Develop an awareness of technological advancements in gathering deep space information.
- + Develop techniques on finding exoplanets.
- + Be able to determine the composition of a planet through its atmospheric and surface data.
- + Be able to determine the factors that support biological life on a planet.

Examinations

There are two externally-examined papers:

Paper 1: Naked-eye Astronomy – 1 hour 45 minutes – 50% of the qualification (100 marks).

Paper 2: Telescopic Astronomy – 1 hour 45 minutes – 50% of the qualification (100 marks).

Opportunities and Progression

GCSE Astronomy will help aid your progression to A Level Physics and Geography. It bridges the gap between the subjects and will also develop skills that will improve computing proficiency which can be used further in Computer Science. Students will be given the opportunity to work from a real observatory and be immersed in the use of a virtual reality led curriculum.



Biology

Are you interested in: Learning about the living world and how your body works, as well as developing your analytical and problem-solving skills through practical work?

Head of subject: Mr Swanwick

Exam board: Pearson Edexcel

Exam code/s: 1BIO

Entry requirements:

None

Introduction to your subject

In GCSE Biology you will learn how:

- + Life processes depend on molecules whose structure is related to their function.
- + Cells, tissues, organs and organ systems enable living processes to be performed effectively.
- + Living organisms form populations, communities and ecosystems, which interact with each other, with the environment and with humans in many different ways.
- + Living organisms are interdependent and show adaptations to their environment.
- + Life on Earth is dependent on photosynthesis in which light energy is trapped to fix carbon dioxide and combined with hydrogen from water to make organic compounds and oxygen.
- + Organic compounds are used as fuels in cellular respiration to allow the other chemical reactions necessary for life.
- + The chemicals in ecosystems are continually cycling through the natural world.
- + The characteristics of a living organism are influenced by its genome and by its environment.
- + Evolution occurs by natural selection and accounts for biodiversity and how organisms are all related.

Course content

- + Topic 1 – Key concepts in biology.
- + Topic 2 – Cells and control.
- + Topic 3 – Genetics.
- + Topic 4 – Natural selection and genetic modification.
- + Topic 5 – Health, disease and the development of medicines.
- + Topic 6 – Plant structures and their functions.
- + Topic 7 – Animal coordination, control and homeostasis.
- + Topic 8 – Exchange and transport in animals.
- + Topic 9 – Ecosystems and material cycles.

Examinations

There are two externally-examined papers:

Paper 1: Written examination – 1 hour 45 minutes – worth 50% of the qualification (100 marks). Topics 1-5 are assessed.

Paper 2: Written examination – 1 hour 45 minutes – worth 50% of the qualification (100 marks). Topics 1 and 6-9 are assessed.

Both papers are a mixture of different question styles, including multiple-choice questions, short answer questions, calculations and extended open-response questions.

Business

Are you interested in: How businesses operate and function? Researching and learning about a range of real-world business examples from many different business sectors? The skills required to effectively manage and run businesses?

Head of subject: Miss Carroll

Exam board: AQA

Exam code/s: 8132

Entry requirements:

None

Introduction to your subject

GCSE Business allows students to understand more about the business world. Students will learn about the key functions in business including marketing, finance, HR and operations. Students will also gain an understanding of the different types of ownership and how different companies can be impacted by external factors.

Course content

Students will gain an understanding into business activity and throughout the 2 years will study the following units:

1. Business in the real world.
2. Influences on business.
3. Business operations.
4. Human resources.
5. Marketing.
6. Finance.

Examinations

Paper 1: 1 hour 45 minutes – 50% of the qualification (90 marks).

Influences of operations and human resources on business activity. Covers units: 1, 2, 3 and 4.

Paper 2: 1 hour 45 minutes – 50% of the qualification (90 marks).

Influences of marketing and finance on business activity. Covers units 1, 2, 5 and 6.

Both examination papers contain a range of multiple choice, short answer and calculation questions as well as longer essay questions based around case study and data response stimuli.

Learn about the

key functions

in business, including

marketing, finance

HR and operations

Chemistry

Are you interested in: Explaining a variety of phenomena using attractive and repulsive forces between matter?
Using properties of matter and chemical reactions to solve climate change or provide sustainable fuels?
Designing new materials such as plastics, medicines, catalysts or cosmetics?
Solving complex problems using numerical and practical logic?

Head of subject: Mrs Hale

Exam board: Pearson Edexcel

Exam code/s: ICHO

Entry requirements:
None

Introduction to your subject

Chemistry is divided into 3 subsections:

Physical chemistry deals with states of matter and energy changes. It gives a tour through solids, liquids, gases and solutions in terms of energy, behaviour and particle arrangement. It investigates the physical transitions between different states. It covers rates of reaction and equilibria. It explores whether energy is released or used by a reaction and how we can measure and compare this.

Organic chemistry focuses on the carbon-based molecules that make up living tissue, starting with alkanes and alkenes and developing into larger and more complex molecules such as the amino acids that make up proteins.

Inorganic chemistry involves using the periodic table to establish and explain trends in reactivity. At GCSE we focus on the extremely reactive groups 1 and 7 and the very unreactive group 0. Atomic structure, especially electron arrangement, can be used to predict reactivity and the formulae of compounds. We also learn how to test for and identify certain gases and ions.

Chemistry GCSE is a great option if you plan to study any science in greater depth beyond GCSE.

Course content

- + States of matter and separation of mixtures.
- + Atomic structure.
- + The periodic table and reactions of groups 1, 7 and 0.
- + Ionic, covalent, metallic bonding and properties of nanoparticles.
- + Acids, alkalis and salts.
- + Chemical calculations for masses, gases, solutions and yields.
- + Electrolysis, extraction of metals, transition metals and recycling.
- + Reversible reactions, equilibria and the Haber process.
- + Rates of reaction and energy changes in reactions.
- + Hydrocarbons, fuels and atmospheric chemistry.
- + Alcohols, carboxylic acids and polymers.
- + Testing for ions.

Examinations

Paper 1: Chemistry 1 – 1 hour 45 minutes - worth 50% of the qualification (100 marks).

Paper 2: Chemistry 2 – 1 hour 45 minutes - worth 50% of the qualification (100 marks).

GCSE Chemistry is essential for A Level Chemistry, which is needed for most medicine, dentistry and veterinary science courses at university.

Combined Science

Are you interested in: Studying all three sciences in ways that help you to develop a curiosity about the natural world, which gives you an insight into how science works and enables us to appreciate its relevance in our lives?

Head of subject: Mr Swanwick

Exam board: Pearson Edexcel

Exam code: ISCO

Entry requirements:
None

Introduction to your subject

In GCSE Combined Science you will:

- + Develop scientific knowledge and conceptual understanding through the specific disciplines of Biology, Chemistry and Physics.
- + Develop understanding of the nature, processes and methods of Science, through different types of scientific enquiry that help you to answer scientific questions about the world around you.
- + Develop and learn to apply observational, practical, modelling, enquiry and problem-solving skills in the laboratory, in the field and in other learning environments.
- + Develop your ability to evaluate claims based on Science through critical analysis of methodology, evidence and conclusions, both qualitatively and quantitatively.

Course content

Biology

- + Topic 1 – Key concepts in biology.
- + Topic 2 – Cells and control.
- + Topic 3 – Genetics.
- + Topic 4 – Natural selection and genetic modification.
- + Topic 5 – Health, disease and the development of medicines.
- + Topic 6 – Plant structures and their functions.
- + Topic 7 – Animal coordination, control and homeostasis.
- + Topic 8 – Exchange and transport in animals.
- + Topic 9 – Ecosystems and material cycles.

Chemistry

- + Topic 1 – Key concepts in chemistry.
- + Topic 2 – States of matter and mixtures.
- + Topic 3 – Chemical changes.
- + Topic 4 – Extracting metals and equilibria.
- + Topic 6 – Groups in the periodic table.
- + Topic 7 – Rates of reaction and energy changes.
- + Topic 8 – Fuels and Earth science.

Physics

- + Topic 1 – Key concepts of physics.
- + Topic 2 – Motion and forces.
- + Topic 3 – Conservation of energy.
- + Topic 4 – Waves.
- + Topic 5 – Light and the electromagnetic spectrum.
- + Topic 6 – Radioactivity.
- + Topic 8 – Energy – Forces doing work.
- + Topic 9 – Forces and their effects.
- + Topic 10 – Electricity and circuits.
- + Topic 12 – Magnetism and the motor effect.
- + Topic 13 – Electromagnetic induction.
- + Topic 14 – Particle model.
- + Topic 15 – Forces and matter.

Examinations

There are six externally-examined papers: Each paper is a written examination lasting 1 hour and 10 minutes and is worth 16.67% of the qualification. Each paper is out of 60 marks. All papers are a mixture of different question styles, including multiple-choice questions, short answer questions, calculations and extended open-response questions.

The NEW Combined Science option leads to TWO GCSE qualifications!

Computer Science

Are you interested in: Developing your knowledge of programming and enjoying solving problems?
Understanding how technology works?

Head of subject: Mr Shea

Exam board: OCR

Exam code/s: J277

Entry requirements:

None

Introduction to your subject

Our Computer Science qualification will, above all else, be relevant to the modern and changing world of Computer Science. Computer Science is a practical subject where learners can apply the knowledge and skills learned in the classroom to real-world problems. It is an intensely creative subject that involves invention and excitement. Our Computer Science qualification will value computational thinking, helping learners to develop the skills to solve problems and design systems that do so.

These skills will be the best preparation for learners who want to go on to study Computer Science at A Level and beyond. The qualification will also provide a good grounding for other subject areas that require computational thinking and analytical skills.

Course content

- + Systems architecture.
- + Memory and storage.
- + Computer networks.
- + Network security.
- + Systems software.
- + Ethical, legal, cultural and environmental impacts of digital technology.
- + Common sorting & searching Algorithms.
- + Programming fundamentals.
- + Producing robust programs.
- + Boolean logic.
- + Programming languages and Integrated Development Environments.

Examinations

Paper 1: Computer systems – written exam - 1 hour 30 minutes - worth 50% of the qualification (80 Marks).

Paper 2: Computational thinking, algorithms and programming – written exam - 1 hour 30 minutes - worth 50% of the qualification (80 Marks).

Design Technology (IGCSE)

Are you interested in: Designing, making, drawing, using tools and machinery, working with materials and computer aided design and manufacture?

Head of subject: Mr Selby

Exam board: Cambridge IGCSE

Exam code/s: 0979

Entry requirements:

None but being able to draw well and having good ICT skills is an advantage.

Introduction to your subject

Search '21st Century Skills' on the internet and you'll be informed that both now, and in the future, the world needs people who are creative, able to solve problems, think critically, communicate effectively and collaborate with others. Design & Technology is the only subject that truly offers all of this in one package!

In Design & Technology at Hautlieu, you will be encouraged to hone your design and practical skills through a series of mini-projects that you'll experience in Year 10. You'll be given the opportunity to learn about and use a variety of tools, machinery, processes and materials all of which will better prepare you, not only for your exams, but also for your final project that will occupy a large proportion of your lesson time in Year 11.

If you can draw well, if you can use a computer effectively and if you're someone who enjoys the challenge of designing and making things, Design & Technology at Hautlieu might just be the subject for you.

Course content

- + Learn about and work with a range of materials including plastics, woods, metals, smart materials and composites.
- + Learn about and use tools and processes associated with marking out, cutting, shaping, forming, joining, and finishing a variety of materials.
- + Follow the iterative design process to design and make a product for a specific client/audience.
- + Demonstrate research and investigation skills.
- + Generate and develop design ideas.
- + Utilise a range of different drawing techniques.
- + Use computer aided design and computer aided manufacturing techniques.
- + Make high quality products.
- + Test, evaluate and modify.
- + Be taught about wider issues such as sustainability and the impact that design has on society.

Examinations

The course is 50% assessed project (NEA) and 50% examination. The examination is divided into two separate papers, one written/drawing paper, and one that test your knowledge and understanding of working with a variety of materials (mainly wood, plastic and metal). Your mark from each paper is worth 25% of your overall IGCSE.

Written exam:

Paper 1: Written exam - 1 hour 15 minutes - worth 25% of the qualification (25 marks).

Paper 2: Written exam - 1 hour - worth 25% of the qualification (25 marks).

Design Technology provides you with opportunities to develop a range of 21st century skills.

Design, Engineer, Construct! (DEC!)

Are you interested in: A career in the AEC (Architecture, Engineering & Construction) industries?

Head of subject:
Mr Forestiero

Exam board: TQUK

Exam code/s: 603/1992/6 Level 2 Certificate

Entry requirements for Level 2:
None but an interest in construction, architecture, engineering or surveying.

Introduction to your subject

Not so long ago there were architects, project managers and engineers, but building is so much more complex than that; and so the DEC! course was formulated to introduce you to all the facets of designing, engineering and constructing builds. This is done alongside live projects, meeting industry professionals and using industry standard building management and 3D modelling software. You will also develop problem-solving and presentation skills.

Examinations

Assessed portfolio project (over the two-year course) (50%).

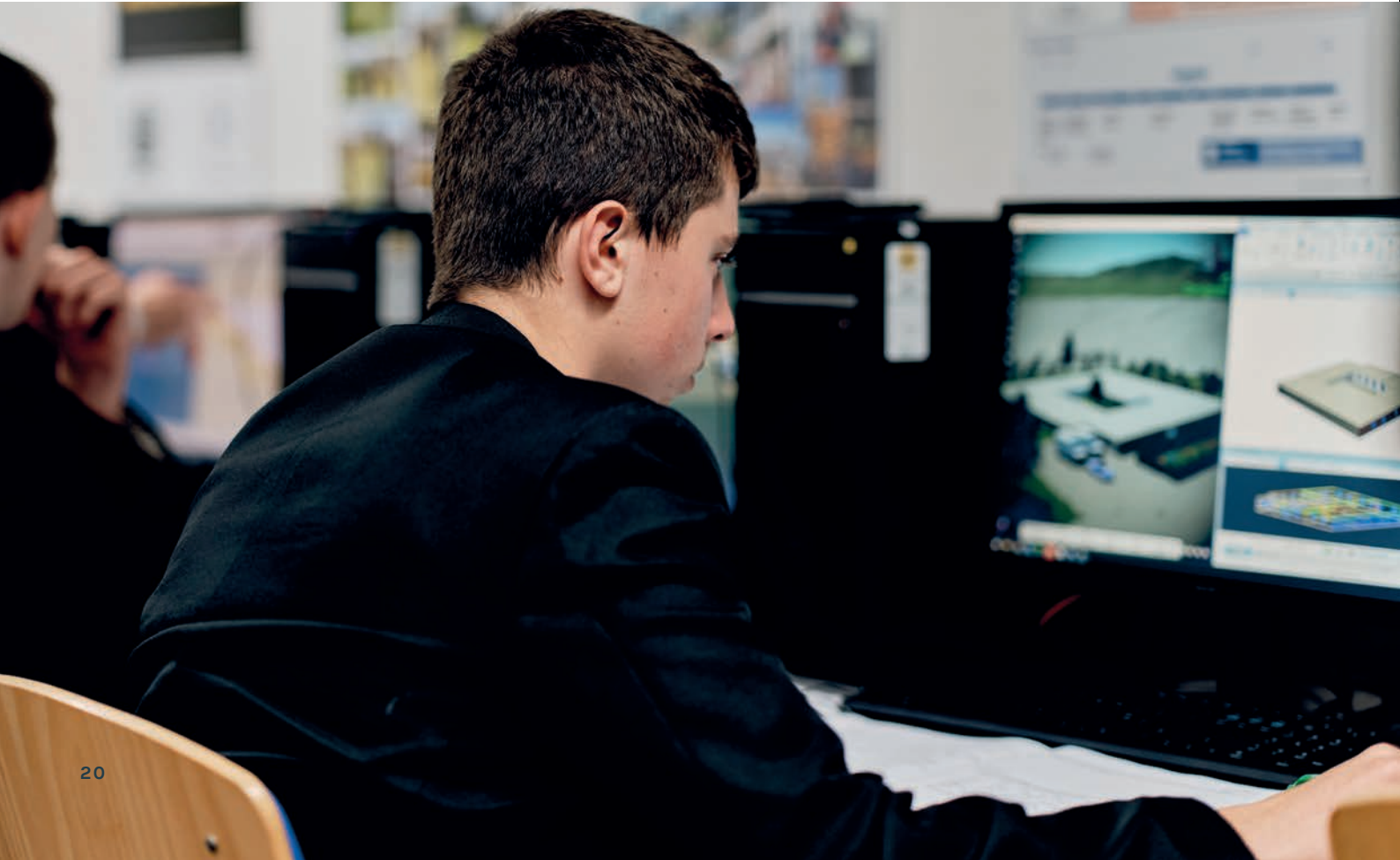
Written examination (50%) based on the knowledge learnt during the project, taken in January of Year 11 (with an option to re-sit in May).

DEC! will give you
the chance to design
a building and see
it come to life!

Course content

The course is made up of a two-year portfolio project covering all aspects of designing and building, followed by an examination. The project has four units with units 1 & 2 defining the building you will design and 3 & 4 delivering and evaluating it. The examination is based on what you will learn by completing the portfolio project.

Introduction to DEC!



Drama (IGCSE)

Are you interested in: Performing, working creatively and cooperatively with others, finding new and dynamic ways to communicate?

Head of subject: Mrs O'Prey

Exam board: Cambridge IGCSE

Exam code/s: 0994

Entry requirements:
None but creativity, self-motivation and a sense of fun are an advantage.

Introduction to your subject

GCSE Drama is a fun but challenging course covering a range of performance skills and texts. You will be assessed as an actor in 3 pieces of coursework including making up your own piece with a group. You will need to be reliable, self-motivated, keen to challenge yourself, enjoy performing and working with others.

Course content

Solo Acting assessment – A 3-minute character monologue taken from a published play, performed to an audience and filmed for the exam board.

Group Acting Assessment – An extract from a published play, performed to an audience and filmed for the exam board.

Devised Acting Assessment – A group piece of devised theatre, performed to an audience and filmed for the exam board*.

Written Exam - Study of TWO set text extracts. Exam questions will be about design, acting and directing ideas as appropriate to the given texts. Explanation and evaluation of the Devised piece that was completed for coursework (see * above).

Examinations

Component 1: Written examination - 2 hours 30 minutes - 40% of the qualification (80 marks)

Component 2: Coursework made up of three assessments undertaken during the course - 60% of the qualification (120 marks)



English Language (IGCSE)

Are you interested in: Reading fiction and non-fiction, analysing language, form and structure, writing creatively and seeing how writers position you to respond to their writing?

Head of subject: Mrs Smith

Exam board: Cambridge IGCSE
First Language English

Exam code/s: 0990

Entry requirements:
None

Introduction to your subject

This exciting and challenging international course offers you the opportunity to evaluate the impact of writers' techniques and then have a go at using them yourself! Although this is a compulsory aspect of your study, your writing will develop in its maturity and you will be able to analyse, evaluate and promote your point of view all of which are essential preparation for your working life.

Course content

All students follow components 1 and 3.

The course: One exam, One Coursework portfolio (3 tasks).

Component 1: Exam 2 hours. Reading: Explorations in creative reading.

What's assessed: There will be 3 reading texts with compulsory tasks. Texts may be linked by theme.

The total mark for the paper is 80 marks, which is 50% of the qualification encompassing comprehension, evaluation and summary skills.

Component 3: Coursework: 80 marks, three writing tasks which are 50% of the qualification.

Writing to discuss, argue and/or persuade in response to a text or texts. The purposes for writing covered in Assignment 1 are to: comment, evaluate, assimilate and argue and/or persuade. Worth 30 marks.

Writing to describe. Assignment 2 is a piece of descriptive writing between 500–800 words in length. Worth 25 marks.

Writing to narrate. The purpose of Assignment 3 is to produce a piece of narrative writing of 500 – 800 words in length. Worth 25 marks.

Examinations

Component 1: Written examination – Reading: Explorations in creative reading - 2 hours - 50% of the qualification (80 marks).

Component 3: Coursework Portfolio - three written assessments - 50% of the qualification (80 marks).

English Literature (IGCSE)

Are you interested in: The world of drama and fiction? Despite this being a compulsory element of your studies, you will be exposed to the different genres of fiction and invited to engage with characters, themes and writers' methods in order to evaluate the impact of their techniques upon their audience/readers.

Head of subject: Mrs Smith

Exam board: Pearson Edexcel
(IGCSE)

Exam code/s: 4ET1

Entry requirements:
None

Introduction to your subject

Welcome to the world of fiction where life events are used to encourage debate about society, to explore societal challenges and their impact on characters. The timeless discussion about issues presented in texts will help to shape your view of our world and your role in it. Students are expected to take part in whole class discussion of the range of poetry, prose and drama that this international course offers.

Course content

Component 1:

Poetry and modern prose. Closed book exam.

Exam structure:

- + Unseen poetry response.
- + Poetry anthology response.
- + Modern prose text: Of Mice and Men.

Skills:

- + Develop skills to analyse unseen poetry.
- + Develop skills to maintain a critical style and informed personal response.
- + Develop skills to analyse language, form and structure and their links to contextual factors in order to create meanings and effect.
- + Quotation skills.

Component 2:

One modern drama text – An Inspector Calls and one literary heritage text – Macbeth. This is an open book exam.

Exam structure:

- + Essay Response: An Inspector Calls.
- + Essay Response: Macbeth.

Skills:

- + Develop skills to analyse how language, form, structure and contextual factors can be used to create meaning and effect.
- + Develop skills to maintain a critical style and informed personal response.

Examinations

Component 1:

Externally assessed – 1 hour 45 minutes - 60% of the total International GCSE qualification (90 marks).

Component 2:

Externally assessed – 1 hour 30 minutes - 40% of the total International GCSE qualification (60 marks).

French

Are you interested in: Studying a language that will broaden your horizons, develop cultural knowledge and foster transferable skills such as communication, problem solving and creativity? The GCSE in French is based on a conviction that learners studying a modern foreign language will develop their desire and ability to communicate with and understand French speakers in a variety of contexts and for a variety of purposes. The course also aims to provide learners with a solid foundation to be successful in future language study.

Head of subject: Mrs Kelleher

Exam board: Pearson Edexcel

Exam code French: 1FR1

Entry requirements:
None

Introduction to your subject

GCSE in French will enable learners to:

- + Develop their ability to communicate confidently and coherently with native speakers in speech and writing, conveying what they want to say with increasing accuracy.
- + Express and develop thoughts and ideas spontaneously and fluently.
- + Listen to and understand clearly articulated, standard speech at near normal speed.
- + Deepen their knowledge about how language works and enrich their vocabulary in order for them to increase their independent use and understanding of extended language in a wide range of contexts.
- + Acquire new knowledge, skills and ways of thinking through the ability to understand and respond to a rich range of authentic spoken and written material, adapted and abridged, as appropriate, including literary texts.
- + Develop awareness and understanding of the culture and identity of the countries and communities where the language is spoken.
- + Be encouraged to make appropriate links to other areas of the curriculum to enable bilingual and deeper learning, where the language may become a medium for constructing and applying knowledge.
- + Develop language learning skills both for immediate use and to prepare them for further language study and use in school, higher education or in employment.
- + Develop language strategies, including repair strategies.

Course content

Students must learn 1200 frequently used words for foundation level and 1700 words for higher level.

There are 6 broad themes: My personal world, lifestyle and wellbeing, my neighbourhood, media and technology, studying and my future, travel and tourism.

Examinations

Paper 1: Speaking test: 15 minutes preparation time 7-9 minutes (Foundation tier) 10-12 minutes (Higher tier) – 25% of qualification 50 marks. This exam requires learners to read a short passage aloud, respond in French to a role play, complete a picture task and a conversation.

Paper 2: Listening examination: 45 minutes (Foundation tier) including 5 minutes reading time. 60 minutes (Higher tier) including 5 minutes reading time – 25% of qualification 50 marks. This component requires learners to respond to a range of questions in English. They also complete a dictation (students listen to the recording and then write down what they hear). Students will be able to listen 3 times to the recordings.

Paper 3: Reading examination: 45 minutes (Foundation tier) 1 hour (Higher tier) – 25% of qualification 50 marks. This component requires learners to respond to a range of questions in English. Students will also complete a translation into English

Paper 4: Writing examination: 1 hour 15 minutes (Foundation tier) 1 hour 20 minutes (Higher tier) – 25% of qualification 50 marks. This component requires learners to respond to a picture task (at foundation level only) and complete 2 written tasks at both foundation and higher level. Students will also translate from English into the target language.

Studying a modern foreign language broadens horizons, enhances cultural understanding, and fosters transferable skills.

Geography

Are you interested in: Human and physical patterns and processes?

Head of subject: Mr McSherry

Exam board: Pearson Edexcel

Exam code/s: 1GBO

Entry requirements:
None

Introduction to your subject

Geography is about understanding natural processes on the earth's surface such as earthquakes, floods and hurricanes and the way in which human activities are influenced by these processes. Additionally, the subject also shows how people attempt to manage these natural processes to limit the destruction and disruption they cause. The subject also looks at human focussed issues such as the management of population, urban areas, wealth and resources.

Course content

Paper 1 Global Geographical Issues:

- + Hazardous Earth.
- + Development Dynamics.
- + Challenges of an urbanising World.

Paper 2 UK Geographical Issues:

- + The UK's Evolving Physical Landscapes including rivers and coasts.
- + The UK's Evolving Human Landscapes including urban and rural areas.

Paper 3: People and Environment Issues

- + People and the Biosphere.
- + Forests under Threat.
- + Consuming Energy Resources.

Examinations

Component 1: Global Geographical Issues, written exam: 1 hour 30 minutes, 94 marks, 37.5% of GCSE.

Component 2: UK Geographical Issues, written exam: 1 hour 30 minutes, 94 marks, 37.5% of GCSE.

Component 3: People & Environment Issues, written exam: 1 hour 30 minutes, 94 marks, 25% of GCSE.



Graphic Communication and Design

Are you interested in: Graphic design, typography, marketing, advertising, branding?

Head of subject: Mr Cole

Exam board: OCR

Exam code/s: J172

Entry requirements:

None

Introduction to your subject

The Graphic Communication and Design GCSE offers an exciting opportunity for students to explore traditional techniques such as collage and printing with contemporary practices using digital media (e.g. Adobe Illustrator, InDesign and Photoshop). Students will explore what communication is through a variety of practitioners and projects, including working on real briefs set by external agencies. We will investigate how imagery can be used to tell a story and convey information without using words and the importance of formal elements such as colour and line in Graphics. In Year 10, we will be working with a variety of themes, including local history, the environment and typography before moving onto the coursework and exam projects in Year 11. Students will be encouraged to find their own graphical style, drawing inspiration from the world around them as well as contemporary designers.

Course content

Component 1: Portfolio – worth 60% of the qualification (120 marks).

Students should produce a portfolio of practical work showing their personal response to either starting point, brief, scenario or stimulus.

Examinations

Component 2: Externally Set Task – worth 40% of the qualification (80 marks).

Students respond to one of five themes, each with a range of written and visual starting points and stimuli. Students research, plan and develop ideas for their response to the option they have chosen, which they must then realise within the ten-hour supervised time period.



History

Are you interested in: Discussing, debating and exploring the past?

Head of subject: Mr Rodgers

Exam board: Pearson Edexcel

Exam code/s: 1H10 11 2M 31

Entry requirements:

None

Introduction to your subject

Studying History at Hautlieu School, whether at GCSE or A Level, provides students with a wonderfully rich variety of skills that are easily transferable into further academic study, employment and even in wider life. Through the study of History we of course explore the past, however it is the bigger societal and even psychological factors that truly make the subject such an enjoyable, mature and thought-provoking focus. How did Chairman Mao lead millions of his own citizens into famine? What factors and elements of luck contributed to Hitler's rise to power? How and why did rebellions arise in Tudor England and what was their fate? Did we truly learn from the suppression of the Plains Indians in the American West? These are just a handful of the questions we ask and it is the challenge of exploring the possible answers that students relish!

Hautlieu historians of the past have visited battlefields and memorial sites of the First World War in Northern France and Belgium, with other visits to Berlin, Krakow and Moscow having been undertaken. Student's exploration of the past along with consideration for other individuals' culture, beliefs, political standpoint and their ambitions to achieve happiness and tribal, national or even global unity, allow our young people to become rounded, understanding and more appreciative of the world in which we live.

Study History; broaden your thinking; be a part of discussions which not only analyse the past but could potentially change the future.

Course content

Medicine Through Time, Early Elizabethan England, The American West, Weimar & Nazi Germany.

Examinations

Paper 1: Medicine Through Time – 1 hour 20 minutes – 30% of the qualification (52 marks).

Paper 2: Elizabethan England & American West – 1 hour 50 minutes – 40% of the qualification (64 marks).

Paper 3: Weimar & Nazi Germany – 1 hour 30 minutes – 30% of the qualification (52 marks).

Study History;

broaden your thinking;

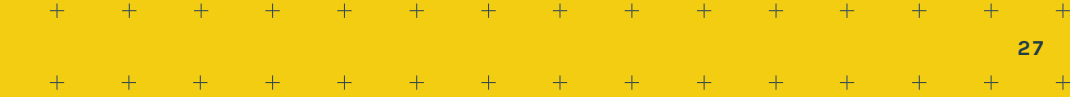
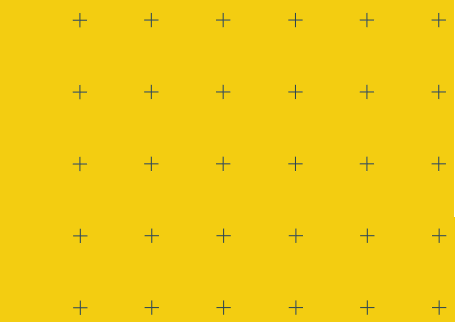
be part of discussions

which not only

analyse the past

but could potentially

change the future!



Home Language (study your first language)

Are you interested in: The opportunity to study your first language and connect to an important part of your identity, whilst gaining independent study skills?

Head of subject: Miss Williams

Exam board: This will depend on which language you are studying.

Entry requirements:

To have a home language other than English, some experience of reading and writing in this language and a willingness to learn independently. In addition, there will need to be a GCSE qualification available in your home language (currently available in: Afrikaans, Arabic, Bengali, Biblical Hebrew, Chinese (spoken Mandarin), French, German, Greek, Gujarati, Italian, Japanese, Modern Hebrew, Panjabi, Persian, Polish, Portuguese, Russian, Spanish).

Introduction to your subject

In 2025 we will be taking on the second cohort of the GCSE Home Language course for Multilingual Learners (MLLs). The GCSE Home Language can be chosen as an optional GCSE subject, either alongside or instead of another language offered (Spanish, French or Mandarin). Students will receive teaching and guidance on how to develop their language proficiency in their Home Language and succeed in the exams, and periodic support with speaking and writing from a fluent speaker. However, students will take a much more independent approach to language learning. Through this course, students will have the opportunity to:

- + Develop their proficiency in the Home Language across all four skills (speaking, listening, reading and writing).
- + Expand vocabulary and literacy skills in the Home Language.
- + Receive support and advice on the course specification and assessment criteria, and coaching in exam skills and revision strategies.
- + Receive support with acquiring resources for independent study.
- + Receive periodic support from a fluent speaker of the Home Language.
- + Investigate and share aspects of cultural identity and Home Language culture.
- + Take a proactive and independent approach to language learning.
- + If continuing to 6th Form at Hautlieu, act as a Language Ambassador for Year 10/11 students taking the Home Language GCSE the following year.

Who can take part?

- + Multilingual Learners who have a Home Language other than English, and who are keen to develop their speaking, listening, reading and writing skills and engage with different aspects of their Home Culture such as literature, television, cinema, customs and traditions.
- + Students should have some experience of reading and writing in their Home Language.

- + For a student to take a GCSE in their Home Language, we will also need to ensure that we have a language specialist who is fluent in their Home Language to carry out the speaking exam. The MLL Lead will be responsible for identifying this person.

Important factors to consider

- + Students and parents must bear in mind that this is not a traditional GCSE Language course.
- + Students will not have a language specialist in their home language to teach them in every lesson, but instead receive periodic support with writing and speaking (or the skill that they need to develop most).
- + For this reason, students choosing this course must be very self-motivated and able to take an independent and proactive approach to their learning.
- + As previously mentioned, we must ensure that we have a language specialist to carry out the speaking exam. Students who would like to study their home language should contact the MLL Lead as early as possible before joining so that we can try to identify a language specialist in advance.
- + Parents are encouraged to support their child in their language development at home, particularly in the productive skills (writing and speaking) but also by encouraging their child to read in their home language.
- + Parents will also have the opportunity to act as 'Language Ambassadors', who could offer occasional language support in lessons or after school.

How do I find out more?

Please contact Miss Williams (MLL Lead) e.williams@hautlieu.sch.je to find out more the GCSE Home Language option.

ICT (IGCSE)

Are you interested in: Using software to produce different types of documents? Understanding how ICT is used?

Head of subject: Mr Shea

Exam board: Cambridge IGCSE

Exam code/s: 0983

Entry requirements:

None

Introduction to your subject

The Cambridge IGCSE Information and Communication Technology syllabus encourages students to develop lifelong skills including:

- + How to analyse, design, implement, test and evaluate Information and Communication Technology (ICT) systems.
- + Consider the impact which new technologies will have on ways of working and the social, economic and ethical issues associated with them.
- + Awareness of how ICT can help in practical and work-related scenarios.

Course content

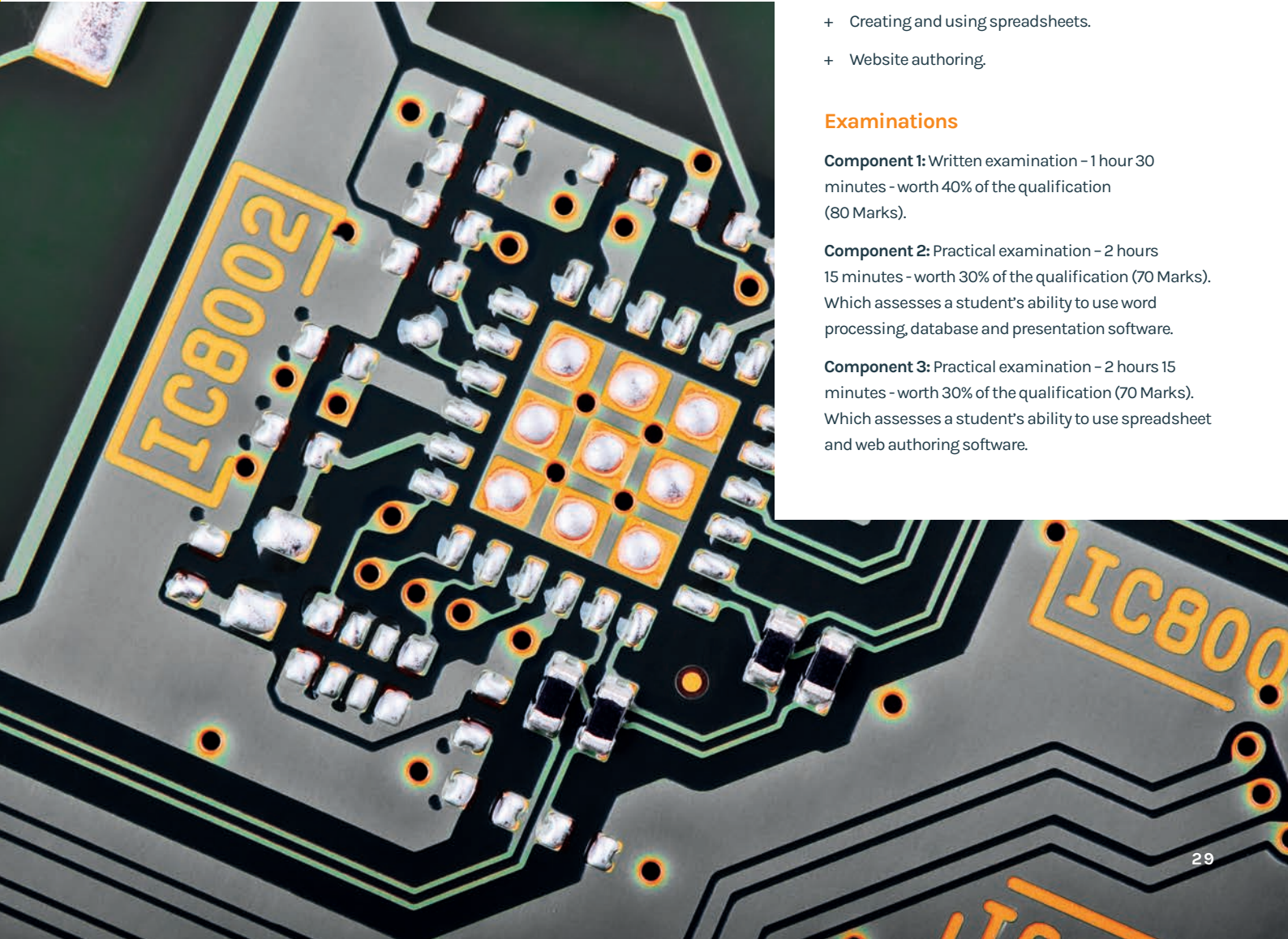
- + Types and components of computer systems.
- + Input and output devices.
- + Storage devices and media.
- + Networks and the effects of using them.
- + The effects of using ICT.
- + ICT applications.
- + The systems life cycle.
- + Safety and security.
- + Creating graphs and charts.
- + Document production.
- + Creating & using databases.
- + Create presentations.
- + Creating and using spreadsheets.
- + Website authoring.

Examinations

Component 1: Written examination – 1 hour 30 minutes - worth 40% of the qualification (80 Marks).

Component 2: Practical examination – 2 hours 15 minutes - worth 30% of the qualification (70 Marks). Which assesses a student's ability to use word processing, database and presentation software.

Component 3: Practical examination – 2 hours 15 minutes - worth 30% of the qualification (70 Marks). Which assesses a student's ability to use spreadsheet and web authoring software.



Mandarin

Are you interested in: Communicating with over half the world's population? Then, Mandarin is for you! China is an established world power and many businesses are looking to deal with China, so having a grasp of the language would make you highly employable. Hautlieu are partnered with Bayi school in Beijing and regularly welcome Bayi students to Hautlieu as well as cultural visits to China which includes a visit to Bayi. Imagine being able to chat to your new friends in Mandarin!

Head of subject: Mrs Kelleher

Exam board: HSK

Entry requirements:
None

Introduction to your subject

HSK stands for Hànyǔ (Chinese) Shuǐpíng (level) Kǎoshì (test), which is the most important Chinese proficiency test in use today.

HSK is in 2 parts. The first of these is a written exam and includes reading and listening sections. Students will reach at least HSK Level 2 by the end of the 2 year programme.

Course content

HSK 1 and 2 assess non-native Chinese speakers' abilities in using Chinese in their daily, academic and professional lives.

Examinations

Level 1: 40 minute test of listening and reading comprehension – The HSK (Level I) is intended for students who have mastered 150 commonly used words and basic grammar patterns.

Level 2: 55 minute test of listening and reading comprehension – candidates need a strong grasp of all the basics and to be able to understand and exchange information about daily life and routine matters. The HSK (Level II) is intended for students that have mastered 300 commonly used words and related grammar patterns.

If you want to be able to communicate with over half of the world's population, Mandarin is the language for you!

Mathematics

Are you interested in: Becoming a better problem solver? Some form of mathematics can be found embedded into most other subjects: Art, Music, Psychology and more obviously to Business, Finance, Sciences and Engineering.

Head of subject: Mr Pattinson

Exam board: Pearson Edexcel

Exam code/s: 1MA1

Entry requirements:
None

Introduction to your subject

GCSE Mathematics is a compulsory subject but Maths is much more than this – it is useful, important and interesting.

GCSE Mathematics provides a strong foundation for further academic and vocational study and for employment, to give students the appropriate mathematical skills, knowledge and understanding to help them progress to a full range of courses in further and higher education.

Course content

The assessments will cover:

- + Number.
- + Algebra.
- + Ratio.
- + Proportion and rates of change.
- + Geometry and measures.
- + Probability.
- + Statistics.

Examinations

Paper 1: Non-calculator – 1 hour 30 minutes – 33 ⅓% of the quantification (80 marks).

Paper 2: Calculator – 1 hour 30 minutes – 33 ⅓% of the quantification (80 marks).

Paper 3: Calculator – 1 hour 30 minutes – 33 ⅓% of the quantification (80 marks).

GCSE Mathematics provides a strong foundation for employment and for further academic and vocational study

Music

Are you interested in: Learning how to compose and write your own music using our latest Apple Mac Computers and software? Do you enjoy performing music regularly? Would you like to debate what makes a piece of music successful?

Head of subject: Miss Sinfield

Exam board: Pearson Edexcel

Exam code/s: 1MU0

Entry requirements:

To be able to perform to at least Grade 2 standard on entry to the school. *Note: You do not have to have taken an examination.*

Introduction to your subject

Are you a student who has been performing as a band member or have been learning an instrument or singing but would like to perform as a group? Would you like regular opportunities to perform to an audience and have the challenge of being recorded at the same time? Would you like to understand how to compose and extend your understanding of harmony and learn about the reasons why music has evolved so dramatically over the past 400 years? The opportunities to find out these questions within GCSE Music study.

Course content

Students will learn how to:

- + Write their own music using either Logic Pro or Sibelius software.
- + Be confident at performing both to their peers in the class and to a wider audience at various opportunities in the year.
- + Analyse musical elements such as pitch, dynamics and tempo, be able to place each set work in a wider context of history and be able to justify their opinion on each piece.
- + Write music out by ear in traditional stave notation by listening to the music only.
- + Write an extended piece of writing on each of the set pieces and compare them to unfamiliar pieces.

Students who decide to take GCSE Music will have an excellent basis from which to continue their studies to A Level Music.

GCSE Music is an excellent basis from which to continue studies to A Level Music

Psychology

Are you interested in: What causes your behaviour and that seen in others? What makes you act the way you do? Do you want to build problem solving and critical thinking skills, developing effective communication and self-development?

Head of subject: Mr Moss

Exam board: Pearson Edexcel

Exam code: 1PS0

Entry requirements:
None

Introduction to your subject

Studying Psychology GCSE will enrich your understanding of what drives our behaviour. The Edexcel GCSE course will focus on gaining knowledge and understanding of biological, cognitive, social and developmental psychology. The subject also provides students with an opportunity to develop analytical skills through critical analysis, research and independent enquiry through the investigation of research methods in Psychology.

Course content

The GCSE Psychology content comprises the following elements:

Section A

- + Topic 1 – Development - How did you develop?
- + Topic 2 – Memory - How does your memory work?
- + Topic 3 – Psychological problems - How would psychological problems affect you?
- + Topic 4 – The brain and neuropsychology - How does your brain affect you?
- + Topic 5 – Social Influence - How do others affect you?

Section B

Topics 6 to 10 are optional; students must study two of them. We will be looking to study Criminal Psychology and Sleep and Dreaming.

- + Topic 6 – Criminal psychology - Why do people become criminals?
- + Topic 7 – The self - What makes you who you are?
- + Topic 8 – Perception - How do you interpret the world around you?
- + Topic 9 – Sleep and dreaming - Why do you need to sleep and dream?
- + Topic 10 – Language, thought and communication - How do you communicate with others?

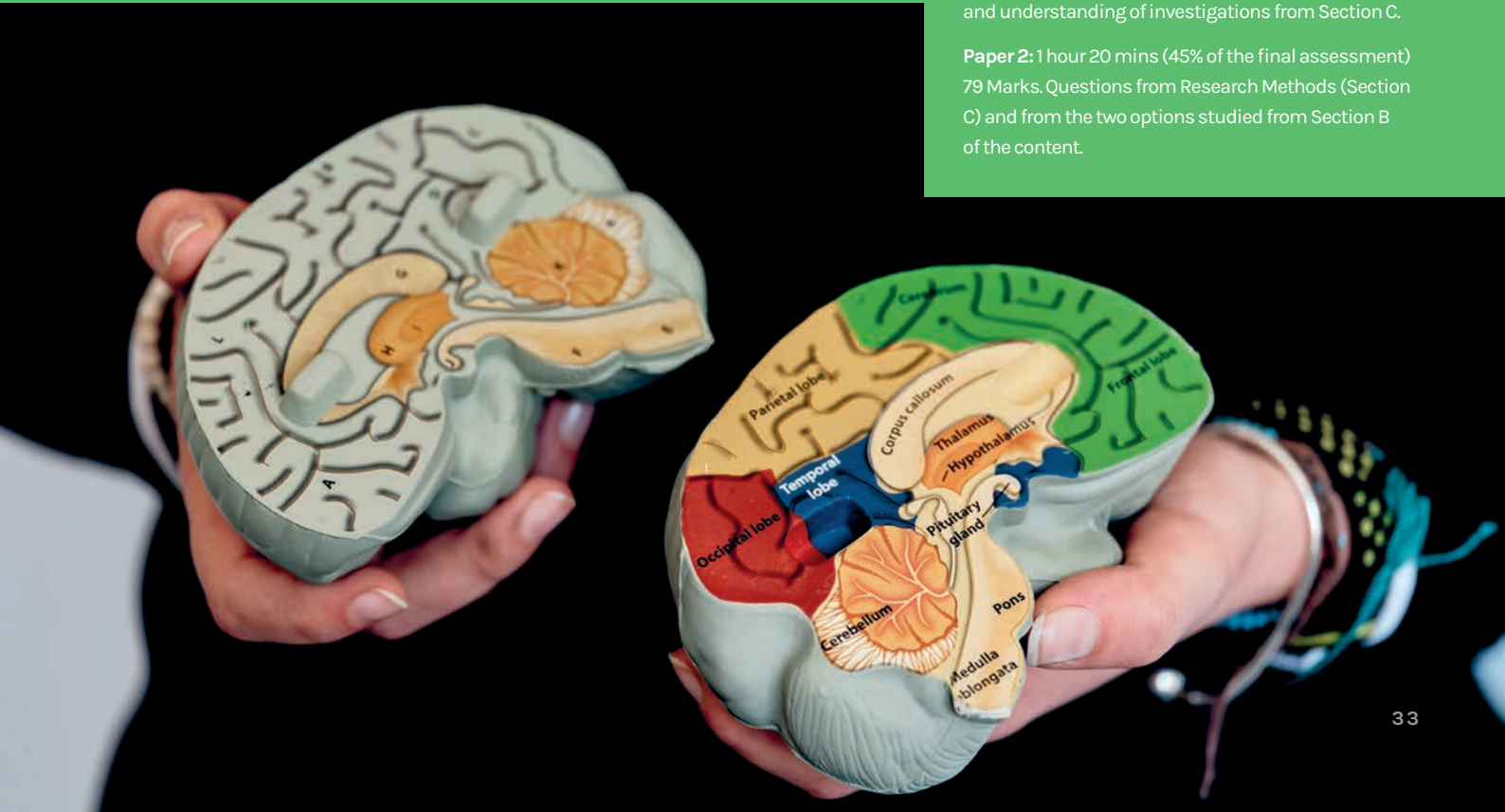
Section C

Topic 11 Research methods - How do you carry out psychological research? (some mathematical content is covered in this component).

Examinations

Paper 1: 1 hour 45 mins (55% of the final assessment) 98 Marks. Questions from the topics in Section A of the content. This paper may also draw on knowledge and understanding of investigations from Section C.

Paper 2: 1 hour 20 mins (45% of the final assessment) 79 Marks. Questions from Research Methods (Section C) and from the two options studied from Section B of the content.



Physical Education

Are you interested in: Developing practical and theoretical performance and understanding in physical activity, sport and fitness?

Head of subject: Miss Nelson

Exam board: AQA

Exam code/s: 8582

Entry requirements:

Participation in competitive physical activity in school, club or at county level.

Introduction to your subject

This is an excellent subject for anyone who enjoys performing, analysing, and learning about sport, physical activity and fitness. The course develops an understanding of how to maintain a healthy lifestyle, through both exercise and nutrition. Students will also learn about the importance of Physical Activity and Sport in Society.

Course content

Students will have a mixture of theory and practical lessons over the two-year GCSE programme.

The theoretical components of the course cover a diverse range of topics in sport and physical activity, these include topics such as: applied anatomy and physiology, movement analysis, physical training, use of data in physical activity, sports psychology, socio-cultural influences and health, fitness and wellbeing.

Within practical lessons, students will cover a range of practical areas that are tailored to the student's needs. Some examples of the practical activities covered are: badminton, netball, football, trampolining, table tennis and athletics.

Examinations

Students will complete two examinations at the end of Year 11, both worth 30% of the final GCSE. The examinations include a combination of multiple choice, short answer and extended answer questions.

Paper 1: The human body and movement in physical activity and sport (30% of GCSE).

Paper 2: Socio-cultural influences and wellbeing in physical activity and sport (30% of GCSE).

Non-Examined assessment (NEA): Practical performance in physical activity and sport (40% of GCSE).

Break down of Non-Examined assessment:

- + Practical performance in three different physical activities in the role of player/performer from the AQA specification. One in a team activity, one in an individual activity and a third in either a team or in an individual activity (30% of GCSE).
- + Theoretical coursework: Analysis and evaluation of performance to bring about improvement in one activity (10% of GCSE).

The course helps to develop an understanding of how to maintain a healthy lifestyle through both exercise and nutrition.

Physics

Are you interested in: Breaking apart the universe and delving into the deeper structure of matter? Do you wonder how things around us work and can we make predictions on how things will behave?

Head of subject: Mr Bowen-Price

Exam board: Pearson Edexcel

Exam code/s: 1PH0

Entry requirements:

None

Introduction to your subject

- + Models are used, as in the particle model of matter or the wave models of light and sound.
- + The concept of cause and effect is used to explain such links as those between force and acceleration, or between changes in atomic nuclei and radioactive emissions.
- + The phenomena of 'action at a distance' and the related concept of the field is the key to analysing electrical, magnetic and gravitational effects.
- + Differences, for example between pressures or temperatures or electrical potentials, are the drivers of change.
- + Proportionality, for example between weight and mass of an object or between force and extension in a spring, is an important aspect of many models in Science.
- + Physical laws and models are expressed in mathematical form.

Course content

Content overview:

- + Topic 1 – Key concepts in Physics.
- + Topic 2 – Motion and Forces.
- + Topic 3 – Conservation of Energy.
- + Topic 4 – Waves.
- + Topic 5 – Light and Electromagnetic Spectrum.
- + Topic 6 – Radioactivity.
- + Topic 7 – Astronomy.
- + Topic 8 – Work done.
- + Topic 9 – Moments.
- + Topic 10 – Electricity.
- + Topic 11 – Static Electricity.
- + Topic 12 – Magnetism.
- + Topic 13 – Electromagnetism.
- + Topic 14 – Particle Model.
- + Topic 15 – Forces and Matter.

Examinations

There are two externally-examined papers:

Paper 1: Written examination - 1 hour 45 minutes - 50% of the qualification (100 marks). Topics 1-7 are assessed.

Paper 2: Written examination - 1 hour 45 minutes - 50% of the qualification (100 marks). Topics 1 and 8-15 are assessed.

Both papers are a mixture of different question styles, including multiple-choice questions, short answer questions, calculations and extended open-response questions.

Religious Studies

Are you interested in: Asking deeper questions about yourself and your place in the world through the study of religion, ethics, society and world cultures?

Head of subject: Mr Fallon

Exam board: AQA

Exam code/s: 8062

Entry requirements:

None

Introduction to your subject

Religious Studies (GCSE) looks at Christianity and Buddhism, examines their beliefs and then asks how they affect how we live our lives. Gender and family, the value of life and equality and fairness are all thought about from the perspectives of these religions. This then gives us an opportunity to reflect on our own beliefs and values. We learn through listening to religions talking about themselves and to their followers, through what they put on YouTube, their art and poetry and their history. This is a way of deepening our understanding and becoming investigators into religion as a phenomenon in the modern world.

Course content

- + Buddhism.
- + Christianity.
- + Relationships and Family.
- + The value of life.
- + Human rights and social justice.
- + The existence of God.

Examinations

Paper 1: The study of religions: beliefs, teachings and practices - 1 hour 45 minutes - 50% of the qualification (102 marks).

Paper 2: Thematic studies - 1 hour 45 minutes - 50% of the qualification (99 marks).

Religious Studies looks at Christianity and Buddhism, examines their beliefs and then asks how they affect how we live our lives.

Spanish

Are you interested in: Studying a modern foreign language that is spoken by over 500 million people worldwide? Would you like to learn about the rich culture of countries that are home to celebrations such as Día de los Muertos and La tomatina? The study of a modern foreign language will broaden horizons, develop cultural knowledge and understanding and foster transferable skills such as confidence, communication, problem solving and creativity. The specification also aims to provide learners with a solid foundation on which to prepare them for future language study.

Head of subject: Mrs Kelleher

Exam board: Pearson Edexcel

Exam code Spanish: 1SP1

Entry requirements:

None

Introduction to your subject

GCSE in Spanish will enable learners to:

- + Develop their ability to communicate confidently and coherently with native speakers in speech and writing, conveying what they want to say increasingly accurately.
- + Express and develop thoughts and ideas spontaneously and fluently.
- + Listen to and understand clearly articulated, standard speech at near normal speed.
- + Deepen their knowledge about how language works and enrich their vocabulary in both Spanish and their native language.
- + Acquire new knowledge, skills and ways of thinking through the ability to understand and respond to a rich range of authentic spoken and written material, including literary texts.
- + Develop awareness and understanding of the culture and identity of the countries and communities where the language is spoken.
- + Be encouraged to make appropriate links to other areas of the curriculum to enable bilingual and deeper learning.
- + Develop language learning skills both for immediate use and to prepare them for further language study and use in school, higher education or in employment.
- + Develop language strategies, including repair strategies.

Course content

Students must learn 1200 frequently used words for foundation level and 1700 words for higher level.

There are 6 broad themes: My personal world, lifestyle and wellbeing, my neighbourhood, media and technology, studying and my future, travel and tourism.

Examinations

Paper 1: Speaking test: 15 minutes preparation time 7-9 minutes (Foundation tier) 10-12 minutes (Higher tier) - 25% of qualification 50 marks. This exam requires learners to read a short passage aloud, respond in Spanish to a role play, complete a picture task and a conversation.

Paper 2: Listening examination: 45 minutes (Foundation tier) including 5 minutes reading time. 60 minutes (Higher tier) including 5 minutes reading time - 25% of qualification 50 marks. This component requires learners to respond to a range of questions in English. They also complete a dictation (students listen to the recording and then write down what they hear). Students will be able to listen 3 times to the recordings.

Paper 3: Reading examination: 45 minutes (Foundation tier) 1 hour (Higher tier) - 25% of qualification 50 marks. This component requires learners to respond to a range of questions in English. Students will also complete a translation into English.

Paper 4: Writing examination: 1 hour 15 minutes (Foundation tier) 1 hour 20 minutes (Higher tier) - 25% of qualification 50 marks. This component requires learners to respond to a picture task (at foundation level only) and complete 2 written tasks at both foundation and higher level. Students will also translate from English into the target language.

Extracurricular activities

Sport

There are a wide variety of extra-curricular opportunities on offer beyond curriculum Physical Education. Clubs and teams operate on a regular basis for inter-school fixtures, cup and tournament competitions. Team training sessions and recreational sessions are on offer weekly and in every term of the school year there are opportunities for regular competition. There are opportunities for competition off Island and a significant number of students progress to representative honours and participation beyond school. Sports that are regularly on offer include netball, football, basketball, rugby, touch rugby, hockey, athletics, badminton, swimming, rounders, tennis and cricket. A fitness room gym area is also available for supervised use. Beyond sport, there are various opportunities for involvement in activity, including Sports Leaders award and coaching awards. As well as their intrinsic value, these awards are particularly valued by employers and in further education as a demonstration of a wide range of skills and abilities.

Sports Facilities

Opened in summer 2006, these facilities are shared between Hautlieu and Highlands College.

- + Sports hall with equipment for a range of indoor sports
- + Fully equipped fitness centre
- + Dance studio area
- + 3G Football pitch
- + A new Sports Hall is also under development and due to open in 2025.

Duke of Edinburgh Award

The Duke of Edinburgh Award Scheme is the world's leading achievement award for young people. It is non-competitive and designed to encourage the development of participants in an environment of social interaction and teamwork. We aim to encourage young people to experience adventure and as such, we offer a residential training course in expedition planning, map reading and camp craft. Following this, students will plan and complete their own practice expedition, over 3 days, including overnight camping on-island. Work then commences on the planning of the qualifying expedition, which takes place off-island in unfamiliar territory. The Duke of Edinburgh Award also requires participants to undertake a personalised programme of volunteering, skill based and physical activities which they choose and complete in their own time.

Music

The Jersey Music Service support a dedicated team of specialist musicians who visit the Island's primary and secondary schools. Students already learning an instrument through this service will continue to receive tuition in school on a weekly rotating timetable. The service does not extend to piano tuition, guitar, drums and singing or to students wishing to begin learning an instrument. In the music department there are opportunities to take part in the choir, jazz band and various groups throughout the school. The department provides groups for many public appearances both in school and in the local community. The department comes together with the Drama Department to focus on the whole school production, but also to provide showcase opportunities for performers and composers throughout the year. As part of the Performance Technology

Faculty, the department will encourage students to work in the tech team and compose music for film and drama and take part in the radio station. There are also opportunities to participate in the highly competitive Hautlieu Battle of the Bands competition.

Performance opportunities

Each year we have our showpiece school production in the spring term and concert in the summer term. Students in all year groups are encouraged to participate as performers, backstage and as tech crew. Smaller scale performance opportunities also occur throughout the year in music and drama.

Study club

Subject specific clubs are on offer to extend interest and participation in a range of areas.

Trident Opportunities

All students will complete two weeks Trident work experience during the Spring Term of Year 10. This will involve students working with local organisations.

The School Council

At Hautlieu, we take time to listen to our students, embracing their views and ideas, leading to changes that make an impact on student learning, well-being and personal development. The student council is a key link between the school and its students to discuss important issues, developments and to feedback on outcomes. All students who have a desire to share their thoughts and have their voice heard are welcome.

Hautlieu School Council comprises of student representatives from all year groups. It is an opportunity for students to come together to discuss relevant topics of interest in relation to Hautlieu, Jersey and beyond. Students meet as year groups and key stage groups, with the support of a member of the senior leadership group. Students can be elected by their mentor group to represent the views of their peers, or simply choose to join discussions.

The student council have previously reviewed the school restaurant and been involved in making changes to the new menu. Members of the student council have also supported the change in sixth form dress code and worked with organisations outside of school to explore children's rights, wellbeing and support for young people. Students of the council have embraced opportunities to meet politicians, discussing various issues such as housing and environmental.

Students who join the council have shared their thoughts on their personal development following engagement with the forum. Students have reported working more collaboratively, understanding the views and opinions of others better, communicating more effectively, thinking with deeper insight and feeling more confident to demonstrate leadership. As such, members of the student council feel well prepared for further studies or to enter the world of work.

At Hautlieu, we encourage all students to reflect on the importance of their voice, and to share this with us.

Student wellbeing

Safeguarding

At Hautlieu we are committed to ensuring that all students are safe in their environment and are not at risk from harm. Any concerns in relations to the safeguarding of students and staff should be reported to the Designated Safeguarding Lead (DSL) Mrs Nikki Kelly, or Deputy DSL Mrs Louise Kedge, or Deputy Head Miss Claire Jackson.

Student Support

We have a strong student support system at Hautlieu. Students are supported by their Mentors (tutors) and Academic Heads of Year (AHOY). In addition to this there are also the following: Education Welfare Officer (EWO), School counsellor, the Special Educational Needs and Disabilities coordinator (SENCo), Teaching Assistants and Emotional Literacy Support Assistant (ELSA).

Mrs Orla Priestley is the Special Needs Coordinator (SENCo) and Mrs Louise Kedge is the Student Support Lead and Positive Mental Health and Wellbeing manager.

Deputy Head Miss Claire Jackson takes overall responsibility for Student Support.

Counselling

School counselling is the opportunity to talk about things that are of concern to a student, in confidence, with a qualified counsellor. What is spoken about will depend on the individual, but common themes are stress, relationships, change, loss and distressing or traumatic events. Counsellors are trained for this special type of work and are professionally managed and supervised. They work closely with school staff and other agencies. Counsellors work within a recognised code of ethics and practice such as that of the British Association of Counsellors and Psychotherapists (BACP). All counsellors receive supervision of their work with young people to ensure the quality of their practice and this is also confidential.

Why have a school counsellor?

A school-based service brings counselling to students in a place that is familiar, safe and secure. If students are able to receive emotional support from a qualified professional, they will have a greater opportunity to fulfil their potential.

Is it confidential?

A key feature of our service at Hautlieu School is that information discussed in the counselling session is treated confidentially. This can include not discussing the work with parents, however for students under the age of 16, we would encourage this to ensure their safety. This can be hard for parents to accept at times but ensuring the confidentiality of our work is crucial for establishing trust, so that young people feel confident to speak openly and freely about what is concerning them. However, if a young person is at risk of significant harm the DSL will always be informed. This may also include referrals to other agencies to keep them safe.

What if I don't want my child to receive counselling?

If a student requests counselling and is able to understand what is involved in the process, then they have the right to access counselling. Parents and carers may not deny them this right. We would, however, prefer that we have your support and we are always happy to talk with you about any concerns that you may have about the idea of counselling.

How does it work?

The decision about whether to take up the offer of counselling is entirely voluntary for students, just as it would be for an adult. Students can self-refer by speaking to someone from the Student Support team or they can speak to their mentor and/or AHOY. Parents can also refer by contacting the school.

Rights Respecting Schools



Hautlieu is currently a Silver Award Rights Respecting School. This involves teaching our students about their rights as an under 18, how rights are protected in Jersey and the global context of children’s rights. As part of this students spend time in mentor sessions discussing issues such as the age of criminal responsibility in Jersey, BBC Jersey headlines like ‘Children could be denied their right to life’, and psychological explanations for discrimination. In addition, students have been trained to deliver PSHE sessions on rights to Year 10s, encouraging them to become ambassadors for the UNCRC (United Nations Convention for the Rights of the Child).

Our students are expected to participate in their community through the school council, student head team, feedback surveys and sports captaincy in order to voice their ideas on making our school more inclusive and achieve the goals of education: environmental awareness, citizenship, employability, access to media, multi-culturalism, respect for their own culture and personal development.

We encourage students to work for children’s rights locally and globally. Year groups are encouraged to select their own charities and organise charity days to raise awareness and funds in addition to our annual ‘Chique Week’ which culminates in the annual teacher gunging. Many of our students are very environmentally conscious and have worked to protect the environment, supporting charities like World Land Trust by organising obstacle courses, non-school uniform events, and cake sales. They are also globally aware: students have been instrumental in collecting clothes and raising money for refugees in Ukraine, as just one example.

Hautlieu School Charter

ARTICLE 29: GOALS OF EDUCATION

- Tolerance
- Non-violence
- Environmental awareness

ARTICLE 16: RIGHT TO PRIVACY

- Data protection
- Private space

ARTICLE 19: PROTECTION FROM HARM

- Safety
- Anti-bullying
- Preventing abuse

ARTICLE 14: FREEDOM OF THOUGHT

- Political views
- Different beliefs
- Religious clothing
- Religious practices
- Belief-based practices
- Religious views

ARTICLE 13: FREEDOM OF EXPRESSION

- Sharing ideas
- Accessible information

Timeline of the process to join Hautlieu as a Year 10 Student in July 2025

October 2024 Half Term

Hautlieu will send a copy of our prospectus to students in Government of Jersey non-fee paying schools who have a mean CAT score of 103 or higher. We will also have a copy of the prospects on the school website - www.hautlieu.co.uk

Tuesday 12th November 2024 - Hautlieu Open Evening

An open evening will be held at Hautlieu to which prospective parents and students from all schools are invited. If any parents or students are unable to attend but wish to find out more information they should contact Jackie Fromage, Student Admissions Administrator, at the school for further information. Email: j.fromage@hautlieu.sch.je Telephone: 01534 736242.

September to November 2024

A team of Hautlieu staff visit all the 11-16 Government of Jersey non-fee-paying schools to speak to any students interested in applying to Hautlieu.

Wednesday 04 December 2024

This is the deadline for the receipt of 14+ application forms. An email or letter acknowledging receipt of applications will be sent to parents from Hautlieu by Monday 09 December 2024. In the unlikely event that an application is lost in the post or is not processed, parents must contact the school BEFORE 3:20pm on Thursday 12 December 2024.

Monday 03 February to Thursday 06 February 2025

Students who have met the entry criteria will be invited to Hautlieu on a day during this week to find out more about the school and to have an individual discussion with a member of staff. The day of the visit will vary according to current school – we will write to you and your child’s school in good time before this visit. Students will need to bring their most recent school report to this meeting. We will then write to you to confirm the offer of a place at Hautlieu for Year 10.

Friday 14 February 2025

This is the deadline for parents, who had applied by the 04 December 2024 deadline, and whose child had not been offered a place as a result of not meeting the entry criteria, to appeal against this decision. The appeals process utilises an online form which is processed by the Department for Children, Young People, Education and Skills.

Monday 24 February 2025 (the first day after the half-term break)

This is the deadline for parents, whose child has been offered a place at Hautlieu, to return the form accepting this offer to the school.

Wednesday 23 April 2025

An Information Evening will be held for parents and students who have accepted their places and are transferring to Hautlieu.

Monday 30 June 2025

Hautlieu welcomes students who are transferring to Hautlieu for their first day at their new school.



The application Process and Entry Criteria to join Hautlieu School as a Year 10 student in 2025

We very much hope that you will make a decision to apply for a place for your son or daughter to join Hautlieu. The section below outlines our entry criteria. Please see page 41 for the timeline for applying to join Hautlieu. It is important to remember, that although there is an entry criteria to join Hautlieu at 14 there is also an independent appeals process, and every year we accept a number of students through this process.

- + You must apply for your son or daughter, who should currently be in Year 9, to join Hautlieu School as a Year 10 student by Wednesday 04 December 2024. The application form can be found at the back of this prospectus or on our website.
- + A mean Cognitive Ability Test (CAT) score of 109 or more is required as the first criteria to join the school in Year 10. All students in Year 9 in island schools undertake this test and the Department for Children, Young People, Education and Skills provide the results directly to Hautlieu. Eligible off-island applicants should contact Hautlieu directly so that arrangements can be made to sit the Cognitive Ability Test.
- + The second criteria for Hautlieu entry is for students to obtain a score of at least 103 in both the English and Mathematics progress assessments taken by all Year 9 students in Government of Jersey schools. Students from other schools and eligible off-island applicants should contact Hautlieu directly so that arrangements can be made to sit these progress assessments.

Appeals for students who do not meet the entry criteria

Students who do not meet the entry criteria, for example have a CAT score below 109, but wish to be considered for entry, must still apply by the deadline of 04 December 2024. This will then enable you to make an appeal for entry should you so wish, by 14 February 2025. The appeals process is managed by the Department for Children, Young People, Education and Skills via an online application form. We will provide details of the online appeals process after applications have been received.

If you require any further information about the school, the 14+ transfer process or our post-16 courses, please contact Jackie Fromage, Student Admissions Administrator, by telephone on 01535 736242 or by email j.fromage@hautlieu.sch.je. You can also visit the school website www.hautlieu.co.uk

Are there any circumstances where a late application to join Hautlieu, i.e. after 04 December 2024, would be considered?

There is a process for this in particular circumstances as shown below:

Hautlieu School – Process for Late Applicants

The application process to join Hautlieu School as a Year 10 student allows parents to make a late application to join Year 10 directly to Hautlieu after the application deadline of the 04 December 2024. In all cases applicants must meet the academic criteria for entry.

Generally late applications are considered under the following circumstances:

- 1. Financial changes to family circumstances which has resulted in the inability of parents to continue to pay fees in fee-paying schools in Jersey or the UK.
- 2. Students returning to the island or moving to Jersey during or just prior to Key Stage 4, but after the 14+ procedure has been completed.
- 3. Specific advice sought and given to the school from the Educational Psychology Service and/or other support agencies.

- 4. Closure of a student’s present school.
- 5. When there are other exceptional circumstances, and the Headteacher of Hautlieu School considers this is in the best interests of the student following discussion with the Headteacher of the student’s present school.
- 6. A student who refuses an offer of a place at Hautlieu and then changes their mind prior to the joining date, may be granted a place at Hautlieu School, at the discretion of the Headteacher of Hautlieu.

It is unlikely that requests will be granted for admission after the half term holiday of the Autumn Term unless there are exceptional circumstances.

All cases will be considered on an individual basis at the discretion of the Headteacher who in reaching a decision will consult with a student’s present Headteacher and any other parties as may be considered necessary. The Headteacher’s decision is final in all cases.

Application form 14+ entry

Please complete all sections in BLOCK CAPITALS. A copy of this form is also available on www.hautlieu.co.uk and can be emailed to j.fromage@hautlieu.sch.je Application deadline: Wednesday 04 December 2024.

LEGAL FIRST NAME

LEGAL MIDDLE NAME

LEGAL SURNAME 1

LEGAL SURNAME 2 (If Applicable)

DATE OF BIRTH

ADDRESS

POSTCODE

SECONDARY SCHOOL CURRENTLY ATTENDED

I GIVE PERMISSION FOR HAUTLIEU TO RECEIVE CAT SCORES AND PROGRESS TEST INFORMATION☐

PARENT’S SIGNATURE / DATE

Contact information to be used for all application related communications.

PARENT’S NAME

PARENT’S MOBILE

PARENT'S LANDLINE

PARENT’S EMAIL

Please remove application form carefully, place in an envelope and send to:

Mrs Jackie Fromage
Admissions
Hautlieu
Wellington Road
St Saviour
Jersey JE2 7TH

For more information contact: j.fromage@hautlieu.sch.je





Hautlieu

Hautlieu School
Wellington Road
St Saviour
Jersey JE2 7TH

Telephone: 01534 736242

hautlieu.co.uk

‘Hautlieu is a truly unique
and special place where
all students are nurtured,
challenged and supported
to achieve their very best
in a calm and focussed
learning environment.’

Kate Blackhall,
Interim Headteacher